



Designers' Choice

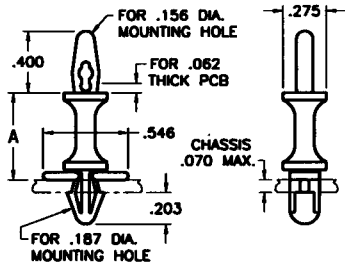
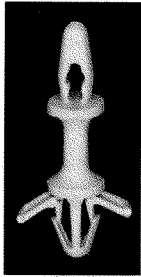
INSULATED PC SPACERS/SUPPORTS

- Easy snap-in assembly
- Designed for .062 thick PC boards and chassis
- Releasable for repairs

- Strong dependable grip
 - No tools required for installation
- MATERIAL:** Nylon, UL Rated 94V-0

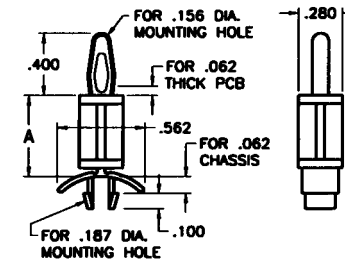
PC TENSION-FIT SUPPORTS

One end locks into chassis, the other end tension-fits into the PC board



CAT. NO.	"A" DIM.
1927A	.250
1928A	.375
1929A	.500
1930A	.625
1931A	.750
1932A	.875
1933A	1.000

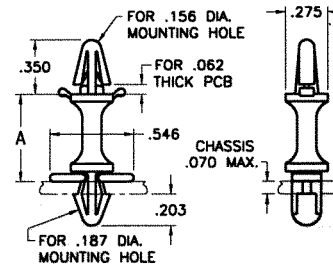
One end locks into chassis, the other end tension-fits into the PC board



CAT. NO.	"A" DIM.
8800	.187
8801	.250
8802	.375
8803	.500
8804	.625
8805	.750
8806	.875

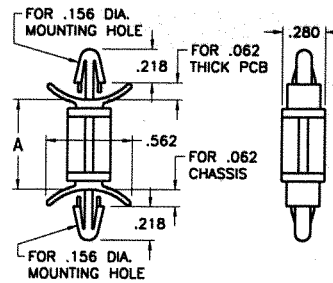
PC LOCK-IN SUPPORTS

One end locks into chassis, the other end locks into the PC board



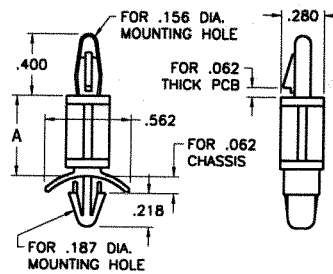
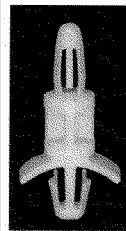
CAT. NO.	"A" DIM.
1927B	.250
1928B	.375
1929B	.500
1930B	.625
1931B	.750
1932B	.875
1933B	1.000

One end locks into chassis, the other end locks into the PC board



CAT. NO.	"A" DIM.
8815	.187
8816	.250
8817	.375
8818	.500
8819	.625
8820	.750
8821	.875

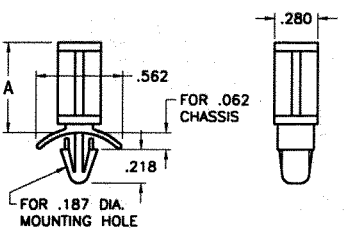
One end locks into chassis, the other end locks into the PC board with easy release lever



CAT. NO.	"A" DIM.
8807	.187
8808	.250
8809	.375
8810	.500
8811	.625
8812	.750
8813	.875
8814	1.000

PC SPACER SUPPORTS

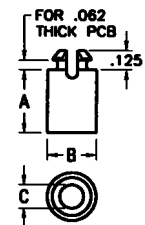
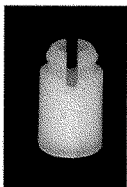
One end locks into chassis, other end supports the PC board



CAT. NO.	"A" DIM.
8822	.187
8823	.250
8824	.375
8825	.500
8826	.625
8827	.750
8828	.875

STACKING SPACERS

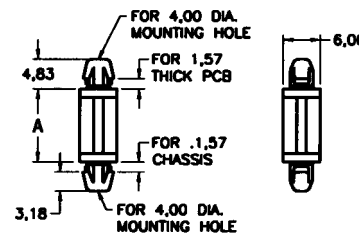
Self-aligning and self retaining. Designed for stacking multiple levels of PC boards. Available for use with #4, #6 & #8 size screws.



CAT. NO.	"A" DIM.	"B" DIM.	"C" DIM.	MTG HOLE	SCREW SIZE
8829	.125	.260	.125	.187	#4
8830	.187	.260	.125	.187	
8831	.250	.260	.125	.187	
8832	.375	.260	.125	.187	
8833	.500	.260	.125	.187	
8834	.625	.260	.125	.187	#6
8835	.250	.312	.153	.234	
8836	.375	.312	.153	.234	
8837	.500	.312	.153	.234	
8838	.625	.312	.153	.234	
8839	.250	.312	.169	.234	#8
8840	.375	.312	.169	.234	
8841	.500	.312	.169	.234	
8842	.625	.312	.169	.234	

METRIC PC LOCK-IN SUPPORTS

One end locks into chassis, the other end locks into the PC board



CAT. NO.	"A" DIM.
8843	3mm
8844	4mm
8845	6mm
8846	8mm
8847	10mm
8848	12mm
8849	14mm
8850	16mm
8851	18mm

MATERIAL: Nylon, UL Rated 94V-2

HINGED STANDOFFS & KITS

Designers' Choice



HINGED STANDOFFS

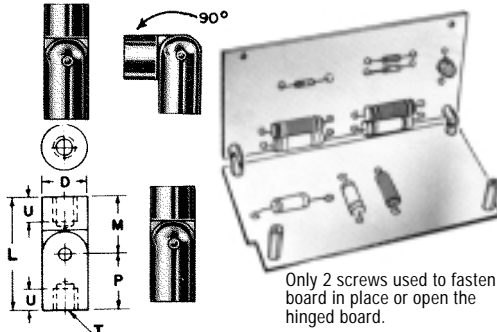
APPLICATIONS UNLIMITED • TIME SAVING • SPACE SAVING
• INTERCONNECT CIRCUITS OR SERVICES WITHOUT DANGER OF SHORTING

MATERIAL:

Brass: per ASTM-B16

Finish: Zinc plate and Gold Iridite

FEMALE/FEMALE HINGE



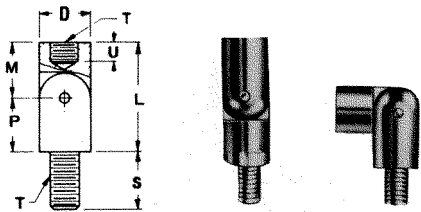
These standoff mount at front of the board.

Only 2 screws used to fasten board in place or open the hinged board.



CAT. NO.	T	D	L	U	M	P
NO.	THREAD	DIA.	LENGTH			
351	4-40	.187	.750	.172	.375	.375
352	4-40	.187	1.000	.250	.375	.625
330	4-40	.187	1.250	.250	.625	.625
353	6-32	.250	.750	.172	.375	.375
354	6-32	.250	1.000	.250	.375	.625
331	6-32	.250	1.250	.250	.625	.625
355	8-32	.250	.750	.172	.375	.375
356	8-32	.250	1.000	.250	.375	.625
332	8-32	.250	1.250	.250	.625	.625

MALE/FEMALE HINGE

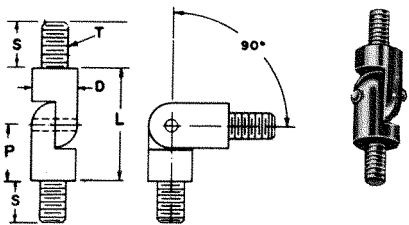


These standoffs mount at front of the board.



CAT. NO.	T	L	D	S	U	P	M
NO.	THREAD	LENGTH	DIA.				
333	4-40	.625	.187	.250	.172	.250	.375
334	4-40	.875	.187	.250	.250	.250	.625
335	6-32	.625	.250	.312	.172	.250	.375
336	6-32	.875	.250	.312	.250	.250	.625
337	8-32	.625	.250	.312	.172	.250	.375
338	8-32	.875	.250	.312	.250	.250	.625

MALE/MALE HINGE



These standoffs mount at front of the board.



CAT. NO.	T	L	D	S	P
NO.	THREAD	LENGTH	DIA.		
357	4-40	.500	.187	.250	.250
358	6-32	.500	.250	.312	.250
359	8-32	.500	.250	.312	.250

SPACER/STANDOFF ORGANIZER



Maintain a neat complete inventory of the most frequently used spacers and standoffs in day-to-day operations. Choice of "8" different kits of the most popular spacers and standoffs. An assortment of various sizes and styles in Brass, Aluminum and Nylon with tapped or thru-hole. Metal cabinet designed to be stacked on one another or wall mounted. Clear plastic drawers labeled for easy identification.

THE FOLLOWING ORGANIZER KITS ARE AVAILABLE FROM STOCK!

1/4" ROUND THREADED

Brass Zinc Plated
Assortment of 1500 pcs. In 1/4", 3/8", 1/2", 3/4" and 1" lengths. With thread sizes of 4-40, 6-32 and 8-32. 100 pcs. Of each size complete with cabinet.
KIT. NO. STR-15

Aluminum Iridite Finish
Assortment of 1500 pcs. In 1/4", 3/8", 1/2", 3/4" and 1" lengths. With thread sizes of 4-40, 6-32 and 8-32. 100 pcs. Of each size complete with cabinet.
KIT. NO. STR-35

1/4" HEX THREADED

Brass Zinc Plated
Assortment of 1500 pcs. In 1/4", 3/8", 1/2", 3/4" and 1" lengths. With thread sizes of 4-40, 6-32 and 8-32. 100 pcs. Of each size complete with cabinet.
KIT. NO. STH-14

Aluminum Iridite Finish
Assortment of 1500 pcs. In 1/4", 3/8", 1/2", 3/4" and 1" lengths. With thread sizes of 4-40, 6-32 and 8-32. 100 pcs. Of each size complete with cabinet.
KIT. NO. STH-22

1/4" ROUND CLEAR

Brass Nickel Plated
Assortment of 1500 pcs. In 1/4", 3/8", 1/2", 3/4" and 1" lengths. With clearance holes for #4, #6 and #6. 100 pcs. Of each size complete with cabinet.
KIT. NO. SPR-13

Aluminum Iridite
Assortment of 1500 pcs. In 1/4", 3/8", 1/2", 3/4" and 1" lengths. With clearance holes for #4, #6 and #6. 100 pcs. Of each size complete with cabinet.
KIT. NO. SPR-34

1/4" ROUND CLEAR

Nylon 6/6
Assortment of 1500 pcs. In 1/4", 3/8", 1/2", 3/4" and 1" lengths. With clearance holes for #4, #6 and #6. 100 pcs. Of each size complete with cabinet.
KIT. NO. SPR-8

1/4" HEX MALE/FEMALE

Brass Nickel Plated
Assortment of 750 pcs. In 1/2", 3/4", 1", 1 1/4" and 1 1/2" lengths. With thread sizes of 4-40, 6-32 and 8-32. 50 pcs. Of each size complete with cabinet.
KIT. NO. STH-19

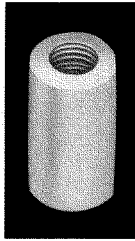
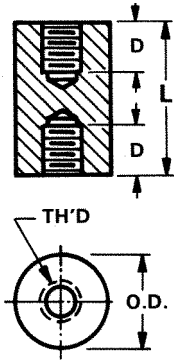


Designers' Choice

INSULATED SPACERS/STANDOFFS

CERAMIC STANDOFFS

- Ideal for very high temperature conditions
- Commercial and military types available
- Special sizes available upon request
- Exceptional strength in compression and tension
- Withstands very high voltage without flashover.
- Military types meet MIL-1-010, NL# clearly marked



COMMERCIAL

CAT. NO.	LENGTH	O.D.	T THREAD	D(2) DEPTH
7710	.250	.250	6-32	THRU
7711	.500	.250	6-32	.156
7712	.375	.375	6-32	.156
7713	.500	.375	6-32	.187
7714	.500	.500	6-32	.140
7715	.750	.500	6-32	.250
7716	1.000	.500	6-32	.375
7717	1.500	.500	6-32	.562
7718	2.500	.500	6-32	.500
7719	2.500	.750	1/4-20	.750
7720	4.000	.750	1/4-20	.750

MILITARY

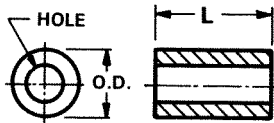
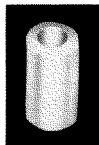
CAT. NO.	LENGTH	O.D.	T THREAD	D(2) DEPTH	NL #
7661	.500	.375	6-32	.156	NL523W01-004
7662	.625	.375	6-32	.250	NL523W01-005
7663	.625	.500	8-32	.187	NL523W02-005
7664	.750	.375	6-32	.250	NL523W01-006
7665	.750	.500	8-32	.250	NL523W02-006
7666	1.000	.375	10-32	.375	NL523W01-008
7667	1.000	.500	8-32	.375	NL523W02-008
7668	1.000	.750	10-32	.375	NL523W03-008
7669	1.250	.375	6-32	.375	NL523W01-010
7670	1.250	.500	8-32	.375	NL523W02-010
7671	1.250	1.000	1/4-20	.437	NL523W04-010
7672	1.500	.375	6-32	.375	NL523W01-012
7673	1.500	.500	8-32	.375	NL523W02-012
7674	1.500	.750	10-32	.375	NL523W03-012
7675	1.500	1.000	1/4-20	.500	NL523W04-012
7676	2.000	.375	6-32	.375	NL523W01-016
7677	2.000	.500	8-32	.375	NL523W02-016
7678	2.000	.750	10-32	.375	NL523W03-016

MATERIAL: Grade L5 Ceramic

PHENOLIC SPACERS/STANDOFFS

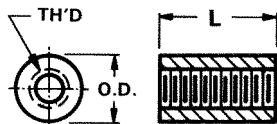
- RESISTS ABRASIONS & CHEMICALS • EXCELLENT DIELECTRIC STRENGTH
- LOW MOISTURE ABSORPTION • GOOD MECHANICAL STRENGTH

MATERIAL: PBE Grade Natural Color Phenolic



CLEAR HOLE SPACERS

"L" Length Inches	.250 O.D. (1/4)			.312 O.D.
	#4 Screw .120 Hole CAT. NO.	#6 Screw .140 Hole CAT. NO.	#8 Screw .171 Hole CAT. NO.	#10 Screw .200 Hole CAT. NO.
1/4 (.250)	360	367	1490	453
3/8 (.375)	361	368	1491	454
1/2 (.500)	362	369	1492	455
3/4 (.750)	363	370	1493	456
1 (1.000)	364	371	1494	457
1 1/2 (1.500)	365	372	374	458
2 (2.000)	366	373	375	459



THREADED STANDOFFS

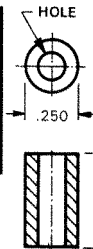
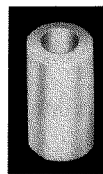
"L" Length Inches	.250 O.D. (1/4)			.312 O.D.	
	4-40 Th'd CAT. NO.	6-32 Th'd CAT. NO.	8-32 Th'd CAT. NO.	8-32 CAT. NO.	10-32 CAT. NO.
1/4 (.250)	376	383	390	460	467
3/8 (.375)	377	384	391	461	468
1/2 (.500)	378	385	392	462	469
3/4 (.750)	379	386	393	463	470
1 (1.000)	380	387	394	464	471
1 1/2 (1.500)	381	388	395	465	472
2 (2.000)	382	389	396	466	473

NOTE: 1 1/2" and 2" spacers are tapped 3/8" deep each end.

NYLON SPACERS/STANDOFFS

Economical for terminal or printed circuit board supports.

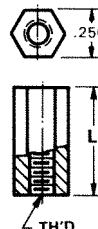
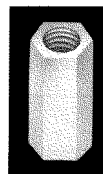
ROUND THRU-HOLE SPACERS



"L" Length Inches	#4 Screw .120 Hole CAT. NO.	#6 Screw .140 Hole CAT. NO.	#8 Screw .171 Hole CAT. NO.
1/8 (.125)	875	883	891
1/4 (.250)	876	884	892
3/8 (.375)	877	885	893
1/2 (.500)	878	886	894
5/8 (.625)	879	887	895
3/4 (.750)	880	888	896
7/8 (.875)	881	889	897
1 (1.000)	882	890	898

MATERIAL: Nylon 6/6

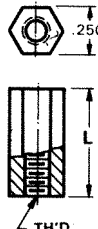
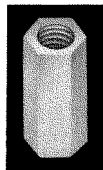
HEX THREADED STANDOFFS



"L" Length Inches	4-40 Thread CAT. NO.	6-32 Thread CAT. NO.	8-32 Thread CAT. NO.
1/4 (.250)	1902A	1903A	1904A
3/8 (.375)	1902B	1903B	1904B
1/2 (.500)	1902C	1903C	1904C
5/8 (.625)	1902F	1903F	1904F
3/4 (.750)	1902D	1903D	1904D
7/8 (.875)	1902G	1903G	1904G
1 (1.000)	1902E	1903E	1904E

MATERIAL: Nylon 6/6

FLAME RETARDANT HEX THREADED STANDOFFS



"L" Length Inches	4-40 Thread CAT. NO.	6-32 Thread CAT. NO.	8-32 Thread CAT. NO.
1/4 (.250)	8440A	8441A	8442A
3/8 (.375)	8440B	8441B	8442B
1/2 (.500)	8440C	8441C	8442C
5/8 (.625)	8440D	8441D	8442D
3/4 (.750)	8440E	8441E	8442E
7/8 (.875)	8440F	8441F	8442F
1 (1.000)	8440G	8441G	8442G

MATERIAL: Nylon 6/6